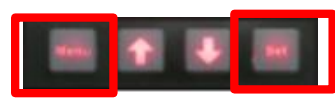


Calibrating the DL1 in 1 leg or 2 legs

Set up a track on the ECDIS of 2NM

Go to menus
(Press Menu and SET together)



CALIB AUTO

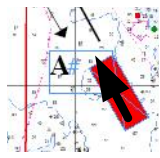


SET AUTO DIST to 2NM



Change by using 'up' to change to next digit, and 'down' to go up a number

Sail vessel to start point on track



Press 'SET' as vessel passes start point



Sail the full length of the track at constant power and course over ground.



Press 'SET' as vessel passes stop point



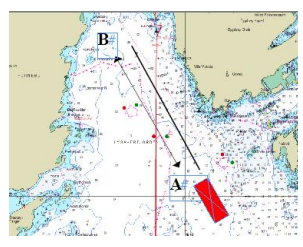
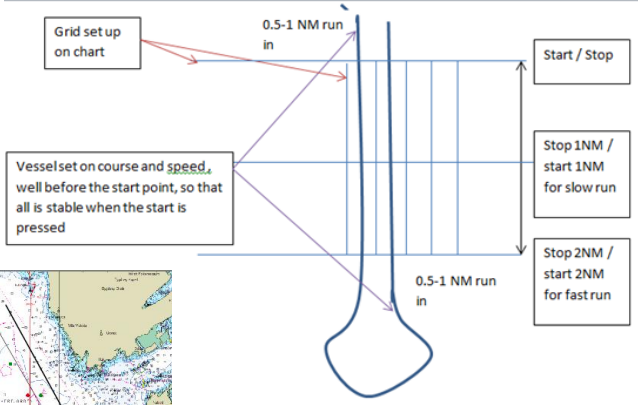
Check the values are approx correct (R should be the same as GPS speed, Mis probably slightly less)



Change by using up and down

Check you are saving to the correct calibration position (Normally 1)

If you are happy with the value press tick, if not Cross



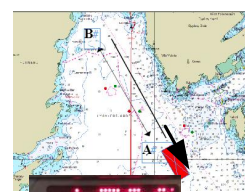
Sail vessel to start point on track



Press 'SET' as vessel passes start point



Sail the full length of the track at constant power and course over ground.



Press 'SET' as vessel passes stop point



Check the values are approx correct (R should be the same as GPS speed, Mis probably slightly less)

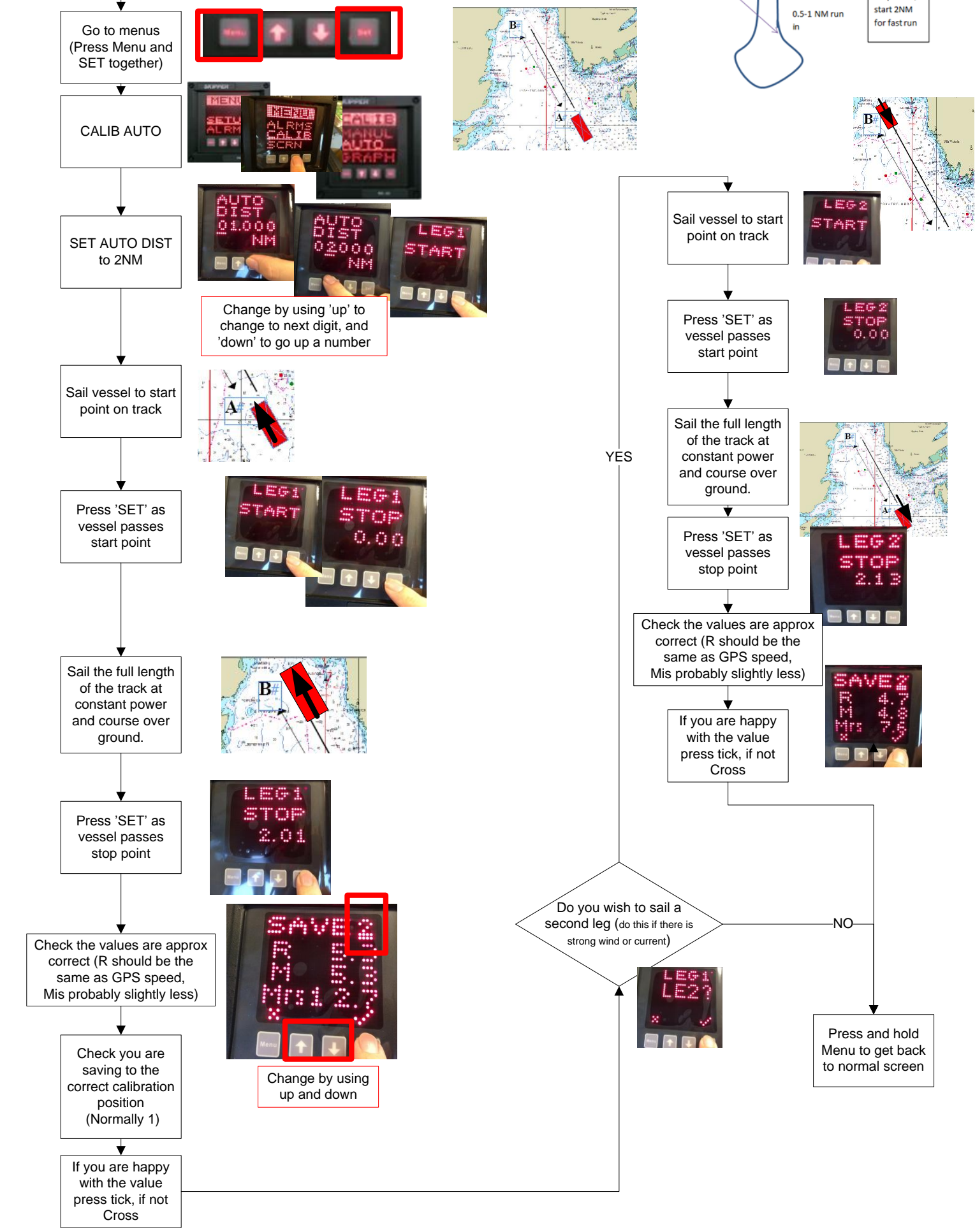


If you are happy with the value press tick, if not Cross

Do you wish to sail a second leg (do this if there is strong wind or current)



Press and hold Menu to get back to normal screen



Verifying the Calibrations on a DL1/EML

The DL1 Speed log normally only needs 1 calibration at a high speed. In some cases where water flow changes with different speeds it may be necessary to perform more calibrations. There should be no need to have More than 1 calibration within a speed range of 3 kn i.e. 9 12 15 kn. If this is the case some should be removed as they can cause inaccuracies. The best place for the calibration is at the normal operating speed. (Advised is one calibration at 13kn)

